

Supplementary Materials: Machine Learning for Exposure-Response Analysis: Methodological Considerations and Confirmation of Their Importance via Computational Experimentations

Rashed Harun, Eric Yang, Nastya Kassir, Wenhui Zhang and James Lu *

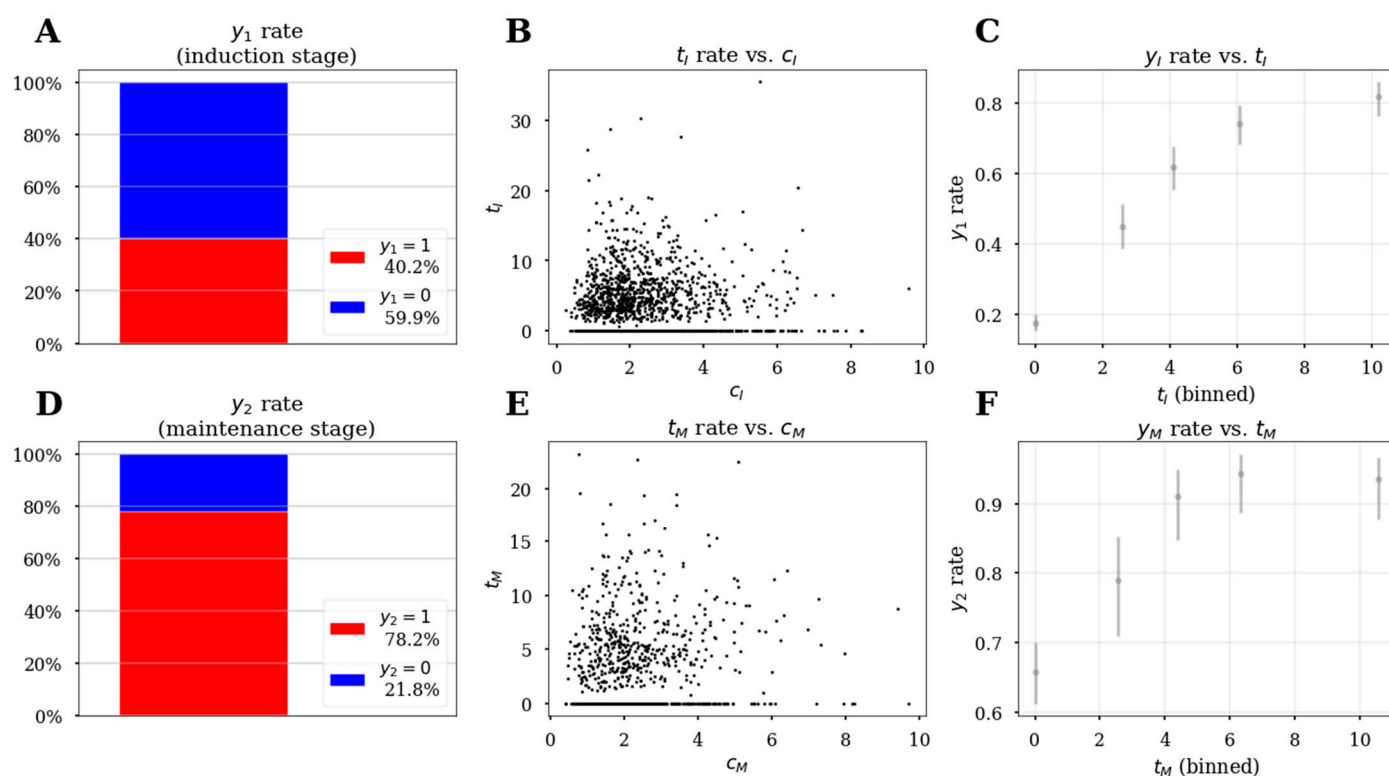


Figure S1. Characteristics of synthetic datasets. Outcome proportions in the induction (A) and maintenance (D) stages. The relationship between exposure and the confounding variable in the induction (B) and maintenance (E) stages. The unadjusted exposure response relationship in the induction (C) and maintenance (F) stages with 95% confidence intervals.

XGboost hyperparameter	Min	max
eta	0.01	.5
max_depth	2	5
min_child_weight	0.01	10
reg_alpha	0.2	10
reg_lambda	0.001	100
subsample	0.6	1

Table S1. Hyperparameter search space for XGBoost models. num_boost_round was set to 100 for all models in this report.