

Supporting Information File to:

Dapagliflozin Mitigates Hypotension in

Lipopolysaccharide-Induced Acute Inflammation Independent

of Glycemia Level

Supplementary Table S1 contains supplementary raw data to Figure 6D, E.

Expression of iNOS relative to β -actin and respective *p*-value

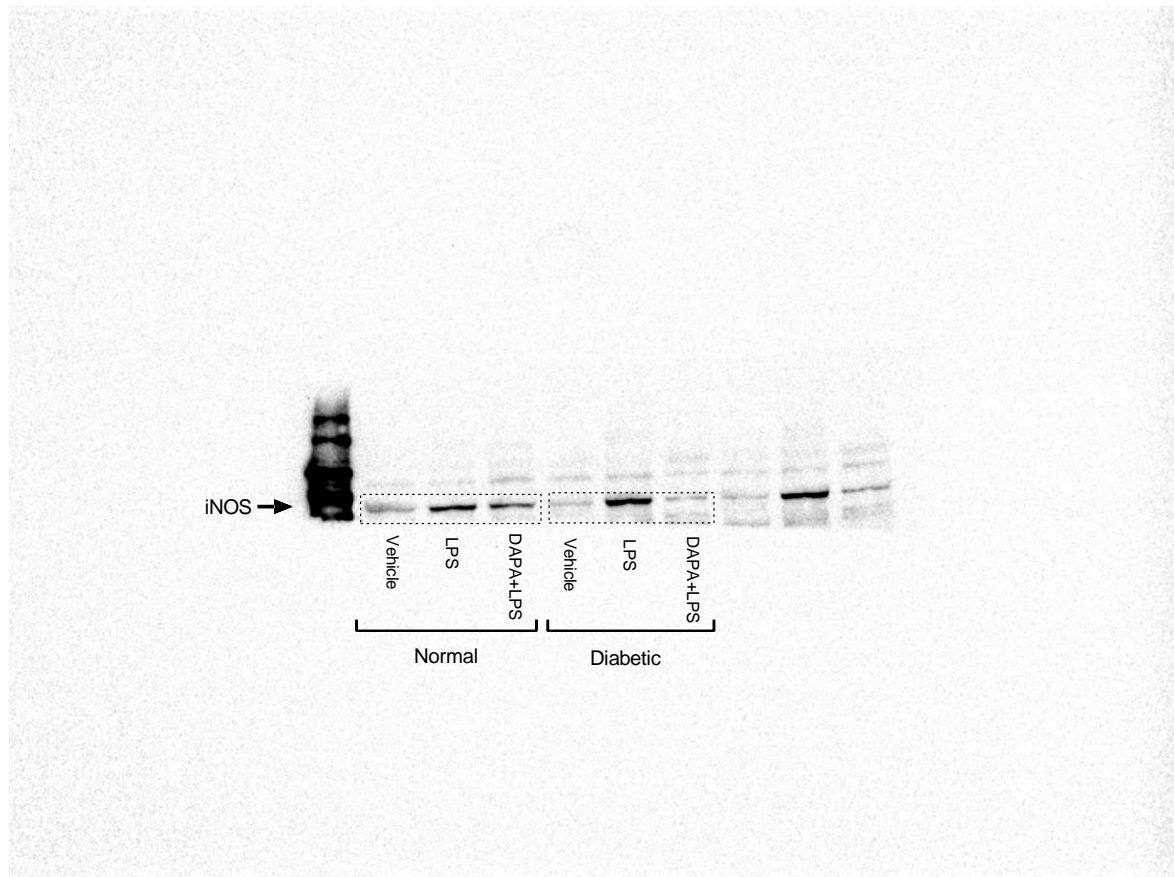
	Expression of iNOS relative to β -actin									
	Normal					Diabetic				
Groups	N1	N2	N3	N4	N5	N1	N2	N3	N4	N5
Vehicle	0.347646	0.218546	0.404715	0.279796	0.229285	0.265847	0.206832	0.240439	0.262731	0.312916
LPS	0.673408	0.938612	0.662284	0.720089	0.67602	0.803036	0.818622	0.531084	0.812203	0.914793
DAPA+LPS	0.669541	0.182536	0.486178	0.565453	0.606609	0.279599	0.268577	0.468614	0.239473	0.565016
<i>P</i> -value	Normal Vehicle vs. LPS $P < 0.0001$ Vehicle vs. DAPA+LPS $P = 0.0463$ LPS vs. DAPA+LPS $P = 0.0230$					Diabetic Vehicle vs. LPS $P < 0.0001$ Vehicle vs. DAPA+LPS $P = 0.4039$ LPS vs. DAPA+LPS $P = 0.0001$				

Supplementary Table S1 contains supplementary raw data to Figure 6D, F.

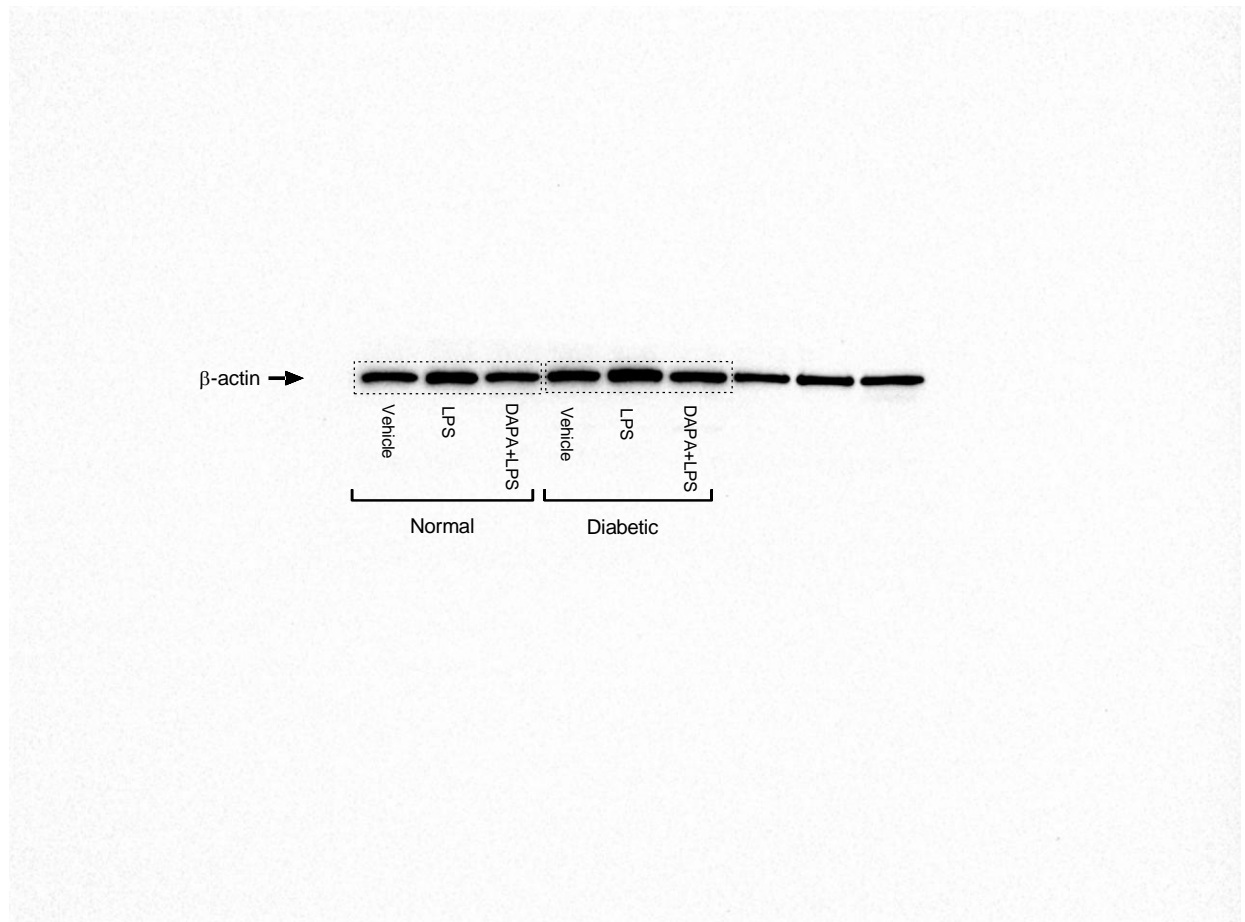
Expression of α -SMA relative to β -actin and respective *p*-value

	Expression of α -SMA relative to β -actin											
	Normal						Diabetic					
Groups	N1	N2	N3	N4	N5	N6	N1	N2	N3	N4	N5	N6
Vehicle	0.55274	0.6433 87	0.70318 1	0.6065 01	0.7621 12	0.84300 6	0.54366 3	0.49937 7	1.04536	0.93222 1	0.506979	1.0657 77
LPS	0.11841 8	0.1204 64	0.43806 7	0.0724 67	0.5485 48	0.18695 9	0.33725 5	0.44738 6	0.539472	0.55680 5	0.226145	0.5348 64
DAPA+ LPS	0.65525 4	0.7073 62	0.76779 3	0.6515 7	0.7193 75	0.72506	0.66036 9	0.64907 2	0.888854	0.79299 4	0.865565	0.8914 3
<i>P</i> -value	Normal Vehicle vs. LPS $P = 0.0002$ Vehicle vs. DAPA+LPS $P = 0.9772$ LPS vs. DAPA+LPS $P < 0.0001$						Diabetic Vehicle vs. LPS $P = 0.0045$ Vehicle vs. DAPA+LPS $P = 0.9593$ LPS vs. DAPA+LPS $P = 0.0022$					

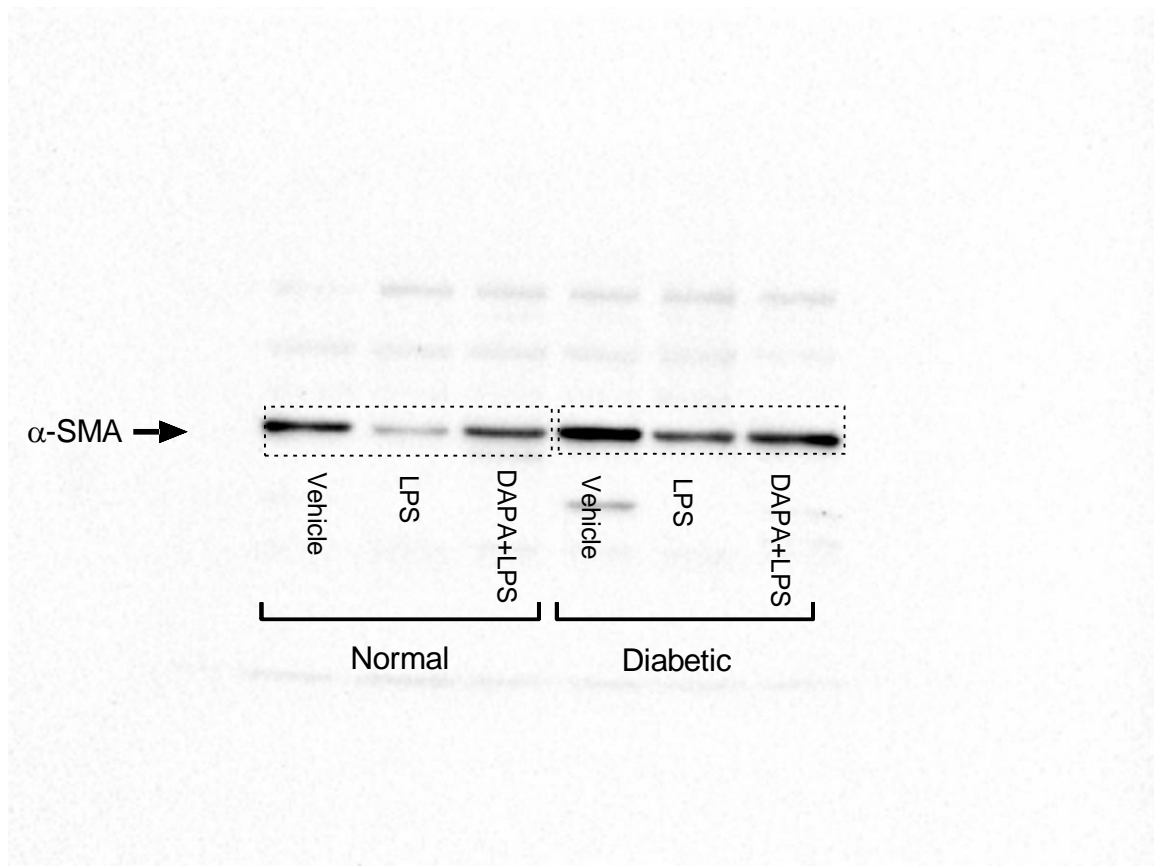
Uncropped blots shown in Figure 6



Uncropped blots shown in Figure 6



Uncropped blots shown in Figure 6



Uncropped blots shown in Figure 6

