

Figure S1. Combined HSQC and HMBC map for G2^{32S}gl. Spectra were taken in D₂O. One-bond coupling peaks are shown in red, while relevant longer range (two-bond ¹H-¹³C coupled) peaks are drawn in blue.

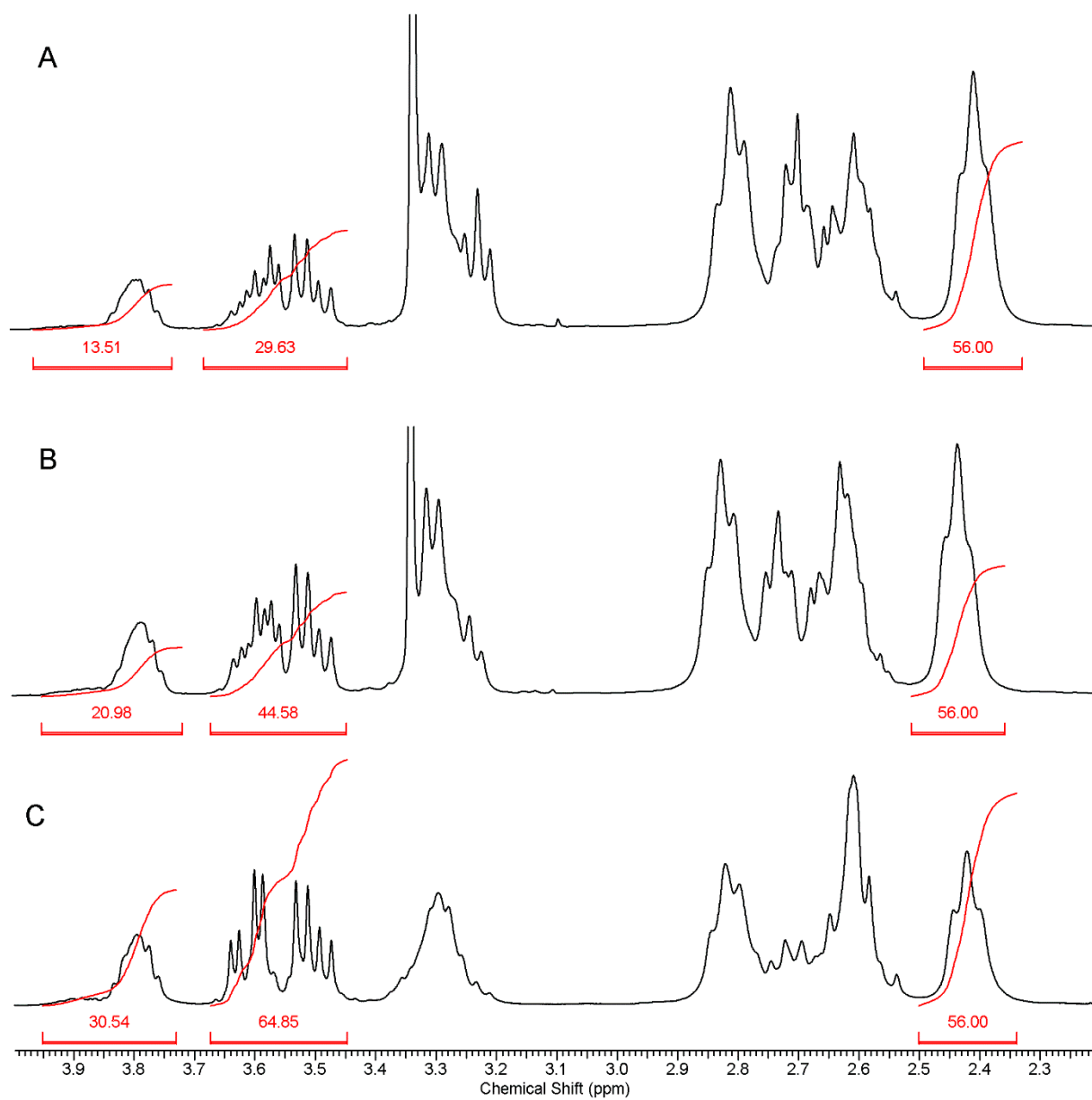


Figure S2. The ^1H NMR spectra of (A): G2^{14Rgl}, (B): G2^{22Rgl}, and (C): G2^{32Rgl} in D_2O .

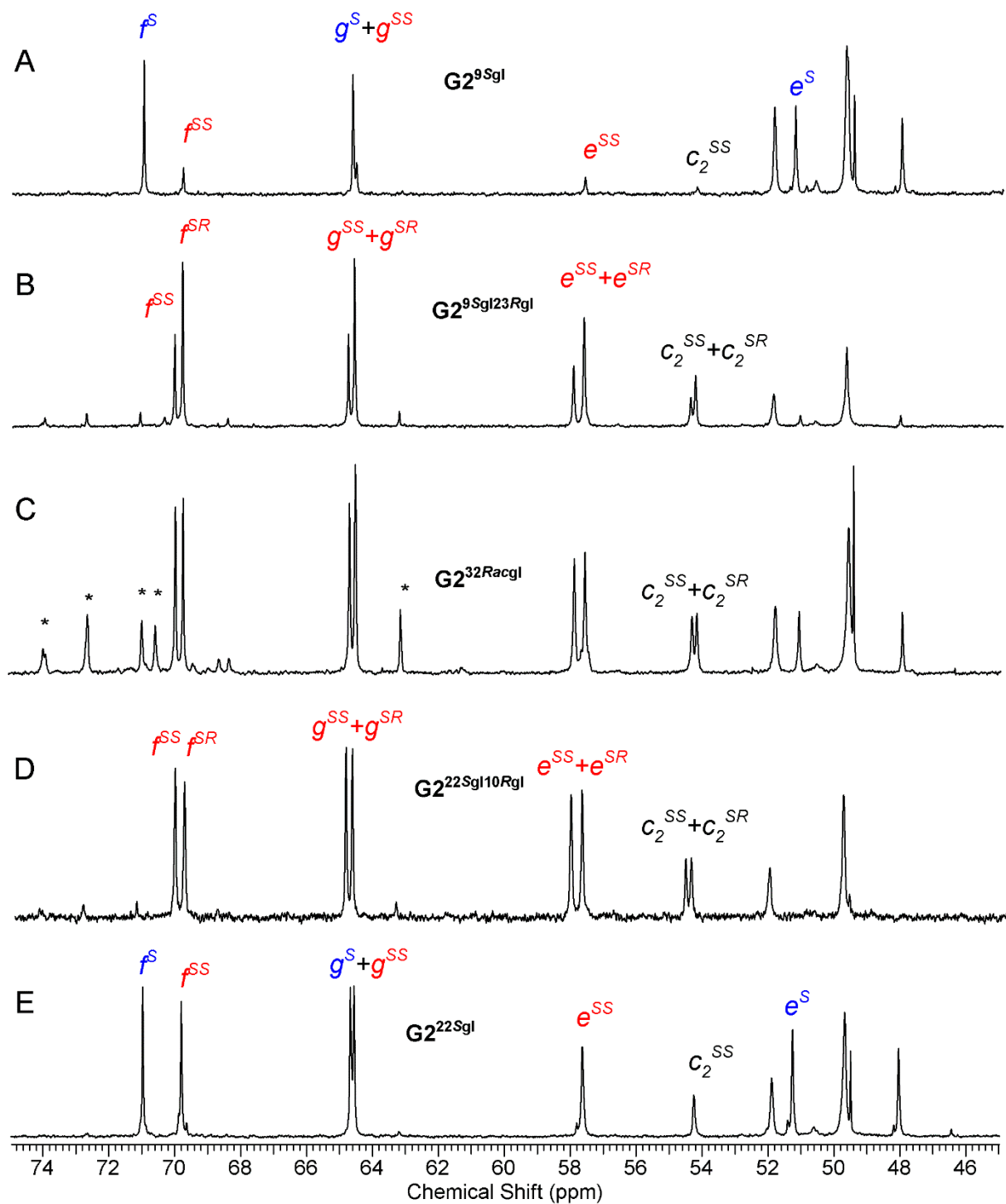


Figure S3. The relevant regions of ^{13}C NMR spectra (from top to bottom): (A): $\text{G2}^9\text{Sgl}$, (B): $\text{G2}^9\text{Sgl23Rgl}$, (C): $\text{G2}^{32}\text{Racgl}$, (D): $\text{G2}^{22}\text{Sgl10Rgl}$, and (E): $\text{G2}^{22}\text{Sgl}$ in D_2O . For peak labeling see section 3.1.2.