

Supplemental

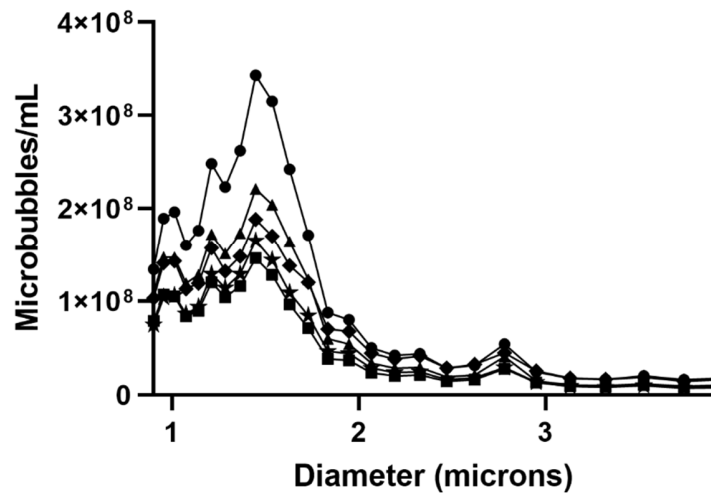
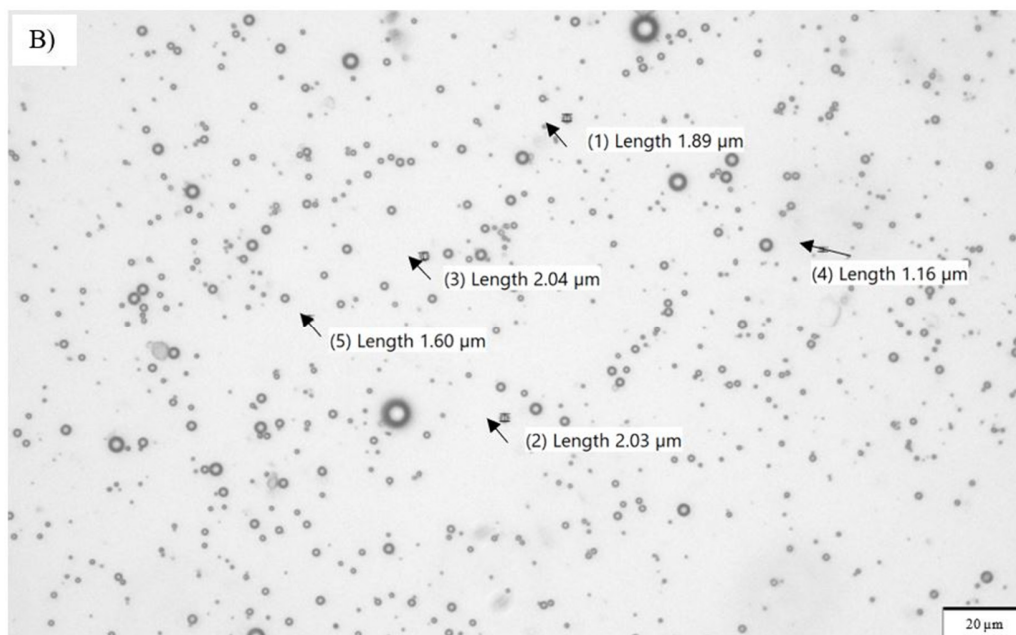
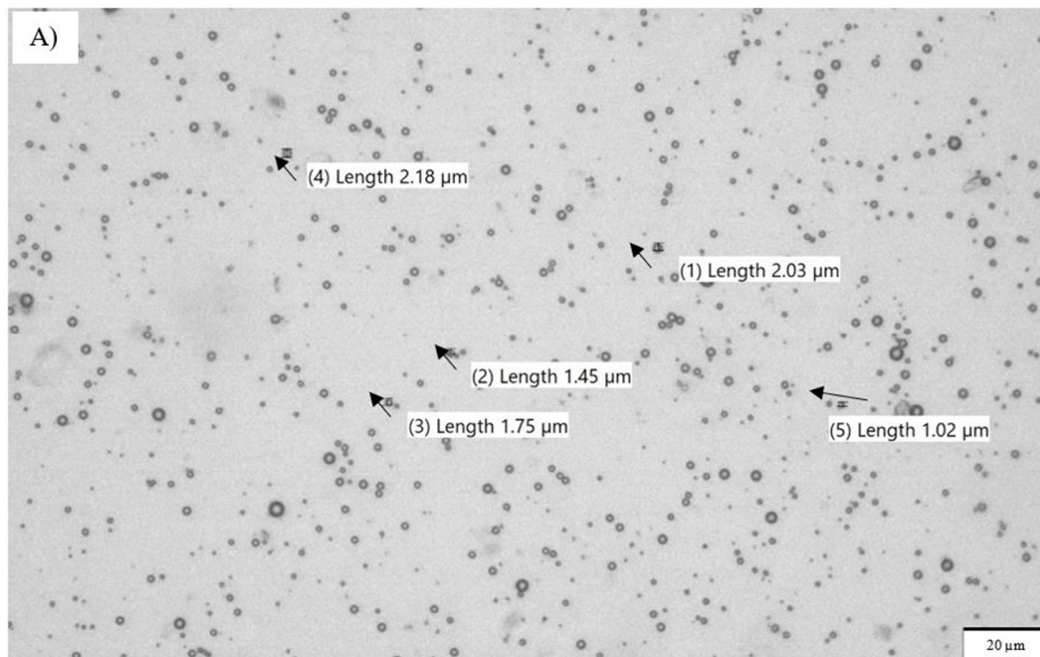


Figure. S1, Representative size distribution profiles of SE61O₂ microbubbles. Unloaded (●), Single loaded lonidamine (■), paclitaxel (▲), dual loaded LP1 (◆), and LP2 (☆)



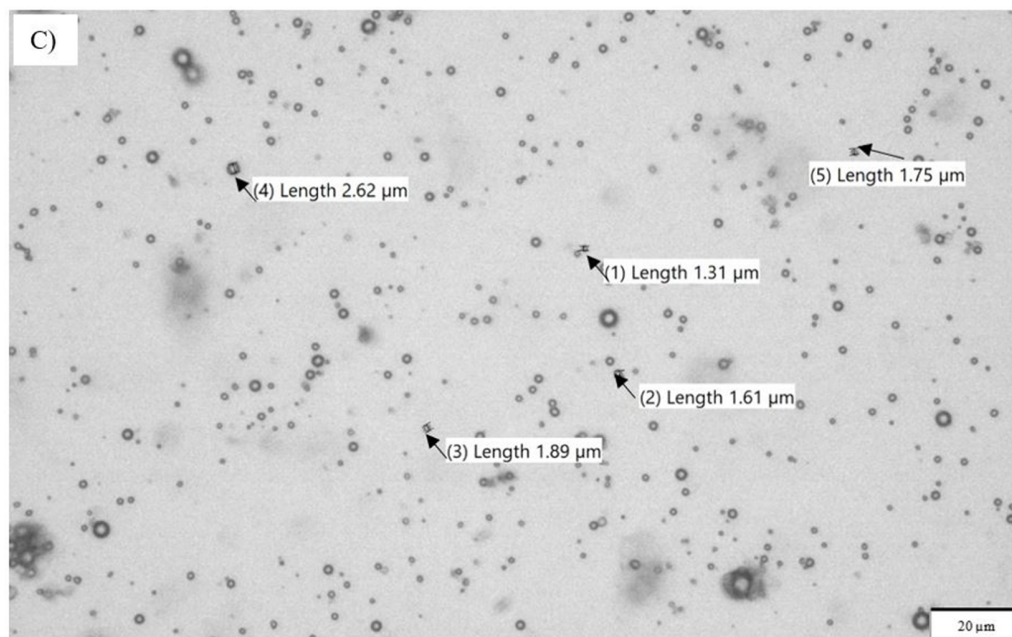


Figure S2. Light Microscopy images of the SE61O₂ microbubbles taken under 40x with 1.6x camera magnification, 20 μm size bar shown for reference. A) unloaded B) Lonidamine-loaded C) Paclitaxel -loaded. Sizes noted by selected bubbles processes using the Olympus cellSens Standard software (Olympus Corporation, Tokyo, Japan).

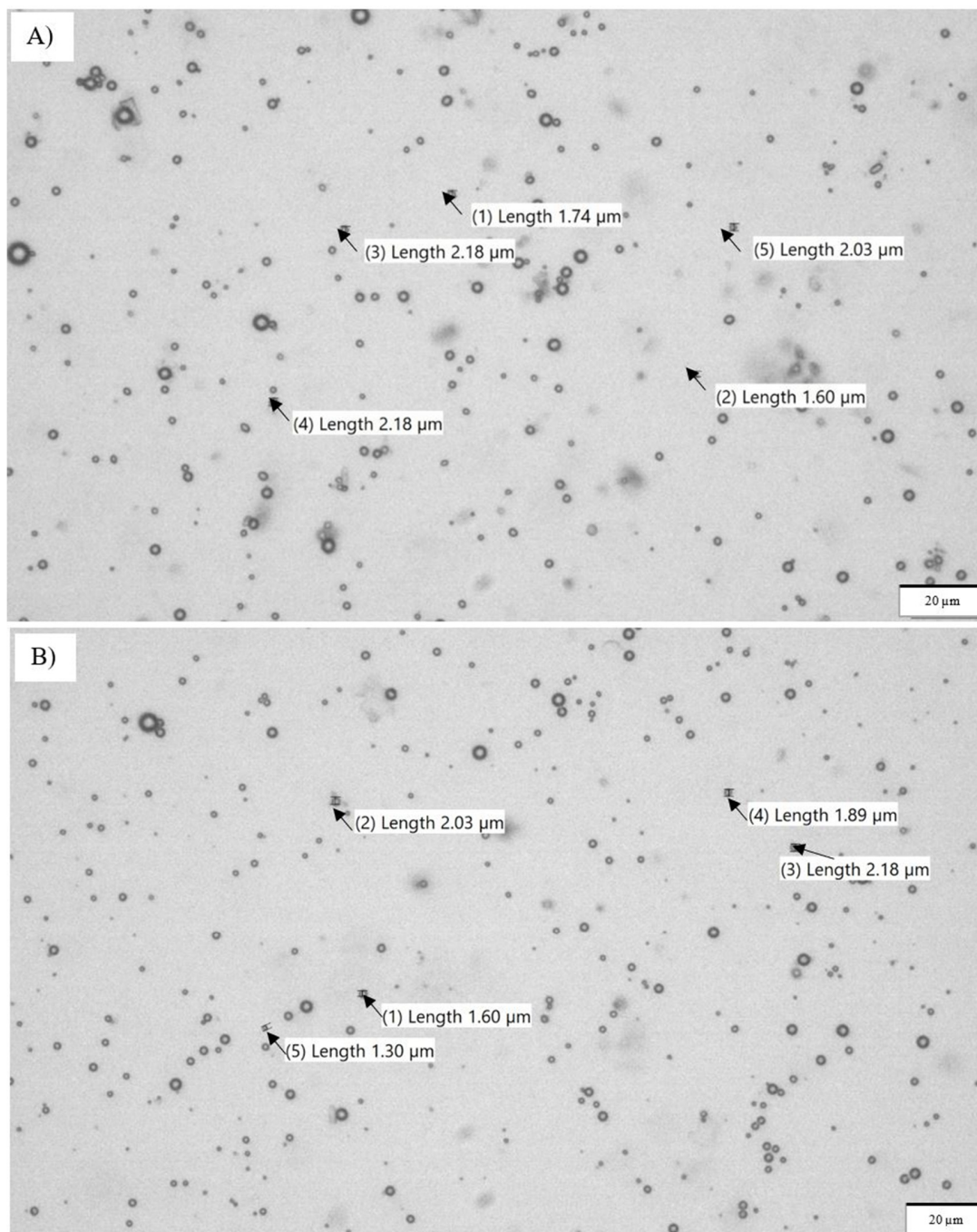


Figure S3. Light Microscopy images of the dual loaded SE61O₂ microbubbles taken under 40x with 1.6x camera magnification, 20 μm size bar shown for reference. A) LP1, B) LP2. Sizes noted by selected bubbles processes using the Olympus cellSens Standard software (Olympus Corporation, Tokyo, Japan).

List of figures for Supplemental

Figure S1. Representative size distribution profiles of SE61_{O2} microbubbles. Unloaded (-●-), Single loaded lonidamine (-■-), paclitaxel (-▲-), dual loaded LP1 (-◆-), and LP2 (-★-)

Figure S2. Light Microscopy images of the SE61_{O2} MBs taken under 40x with 1.6x camera magnification, 20 µm size bar shown for reference. A) Unloaded SE61_{O2} B) LND-loaded SE61_{O2} C) PTX loaded SE61_{O2}. Sizes noted by selected bubbles processes using the Olympus cellSens Standard software (Olympus Corporation, Tokyo, Japan)

Figure S3. Light Microscopy images of dual loaded SE61_{O2} microbubbles taken under 40x with 1.6x camera magnification, 20 µm size bar shown for reference A) LP1 B) LP2. Sizes noted by selected bubbles processes using the Olympus cellSens Standard software (Olympus Corporation, Tokyo, Japan).