

Figure S1:

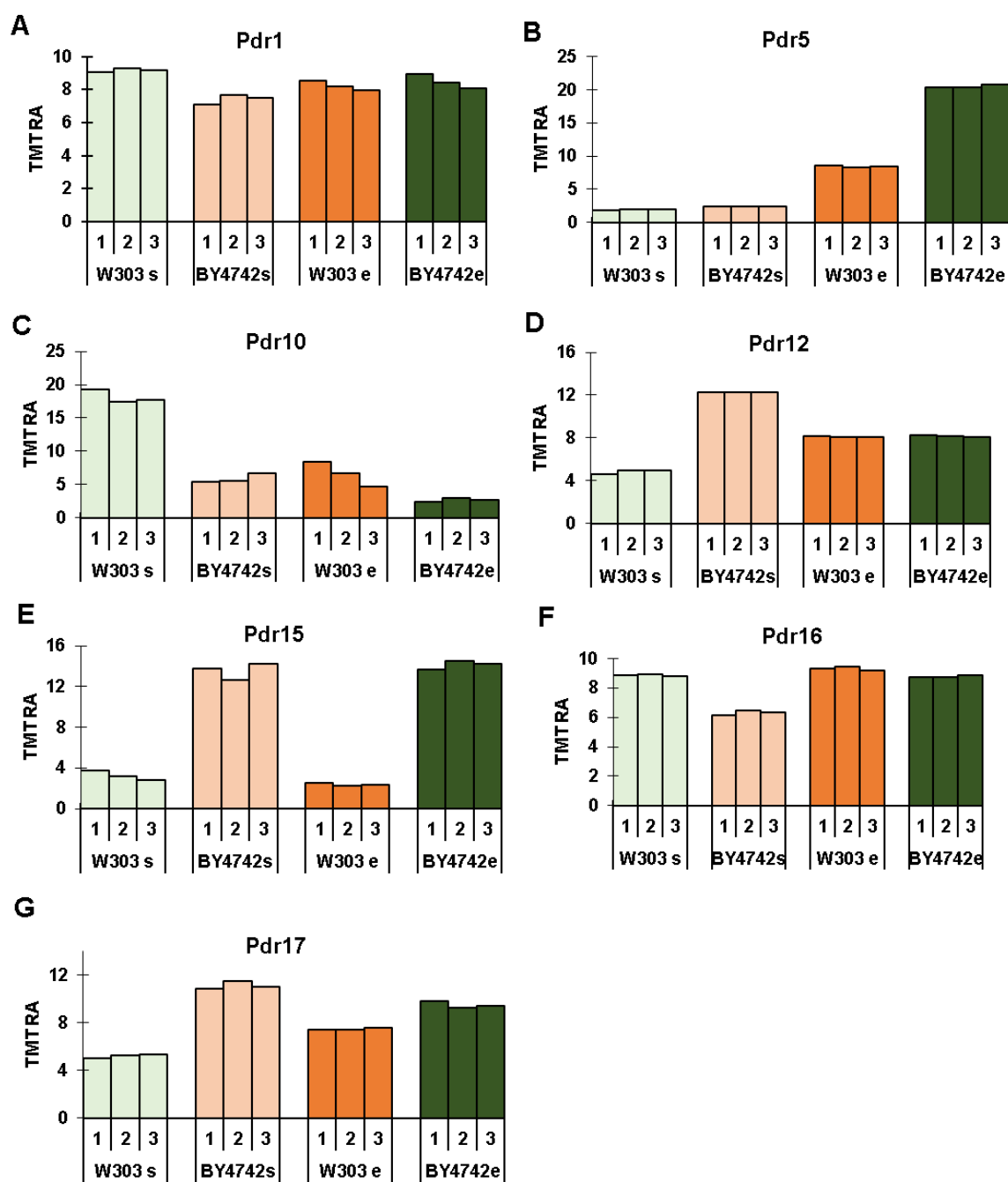


Fig. S1 Examples of differentially abundant proteins: PDR proteins. The TMT relative abundance (RA) is presented for several PDR proteins, which are involved in multidrug resistance. Specifically, we highlight **A) Pdr1, B) Pdr5, C) Pdr10, D) Pdr12, E) Pdr15, F) Pdr16, and G) Pdr17.**

Figure S2:

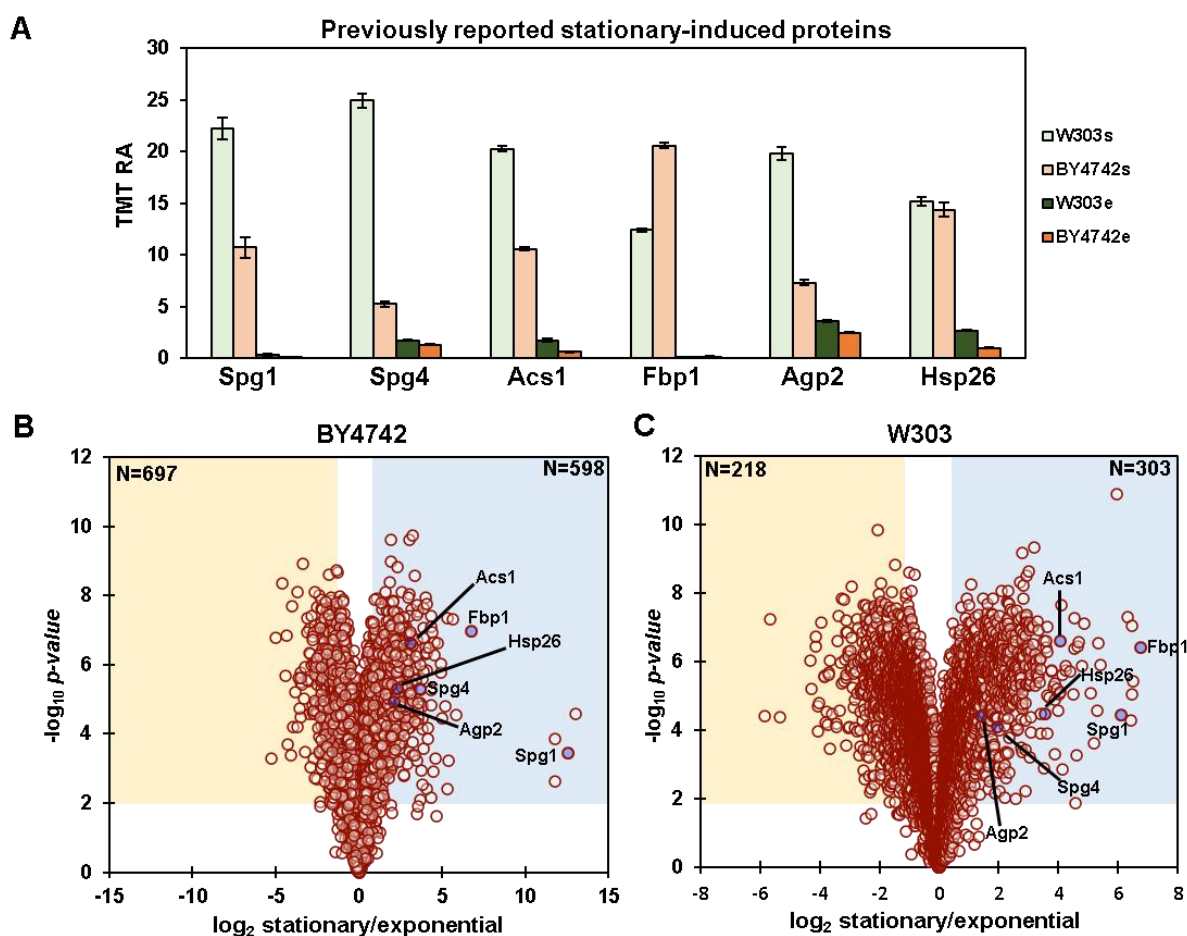


Fig. S2 Differentially abundant proteins when comparing stationary and exponential growth phase. **A)** The TMT relative abundance (RA) is shown for previously reported stationary growth phase-induced proteins: the SPG proteins (Spg1 and Spg4); the acetyl-coenzyme A synthetase 1, Acs1; the fructose-1,6-biphosphatase, Fbp1; the general amino acid permease, Agp2 and the heat shock protein, Hsp26. The volcano plots illustrate the differentially abundant proteins (*i.e.*, $\log_2 > 1$ or $\log_2 < -1$, $p\text{-value} < 0.01$) when comparing the stationary and exponential growth phases in both backgrounds, **B)** BY4742 and **C)** W303. Proteins shown in **A)** are highlighted in the volcano plots.