

Figure S1. Spatial distribution of *Kappa* coefficients obtained in Picos de Europa for the *BinMODIS_{20m}* (bottom left panel), *ProbMODIS* (upper right panel) and *ProbSentinel* (bottom right panel) methods. In the upper left panel, the DEM of this test area is included for easier interpretation of the results. Forested areas are masked in red.

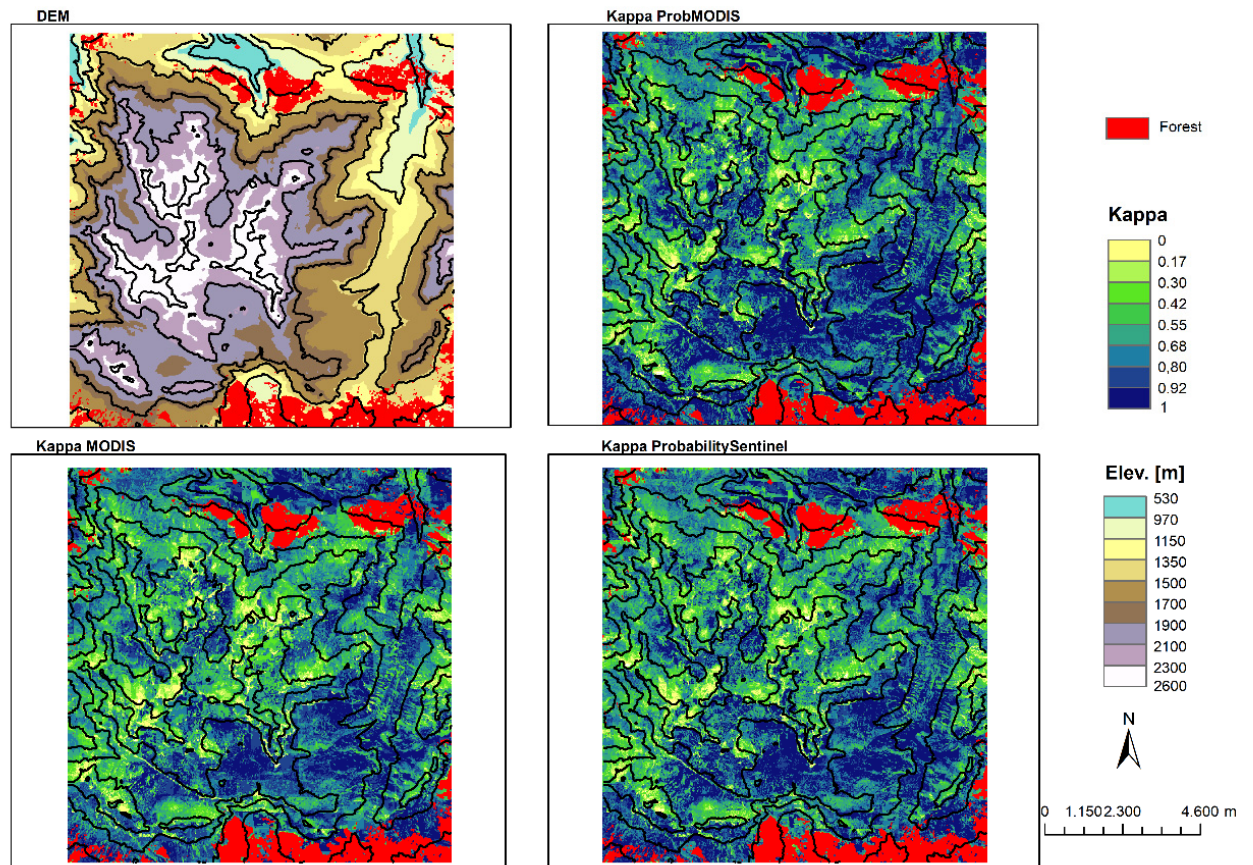


Figure S2. Spatial distribution of *Kappa* coefficients obtained in Sierra Nevada for the *BinMODIS_{20m}* (bottom left panel), *ProbMODIS* (upper right panel) and *ProbSentinel* (bottom right panel) methods. In the upper left panel, the DEM of this test area is included for easier interpretation of the results. Forested areas are masked in red.