

Supplementary Materials: Simulating PM_{2.5} Concentrations during New Year in Cuenca, Ecuador: Effects of Advancing the Time of Burning Activities

René Parra, Claudia Saud and Claudia Espinoza

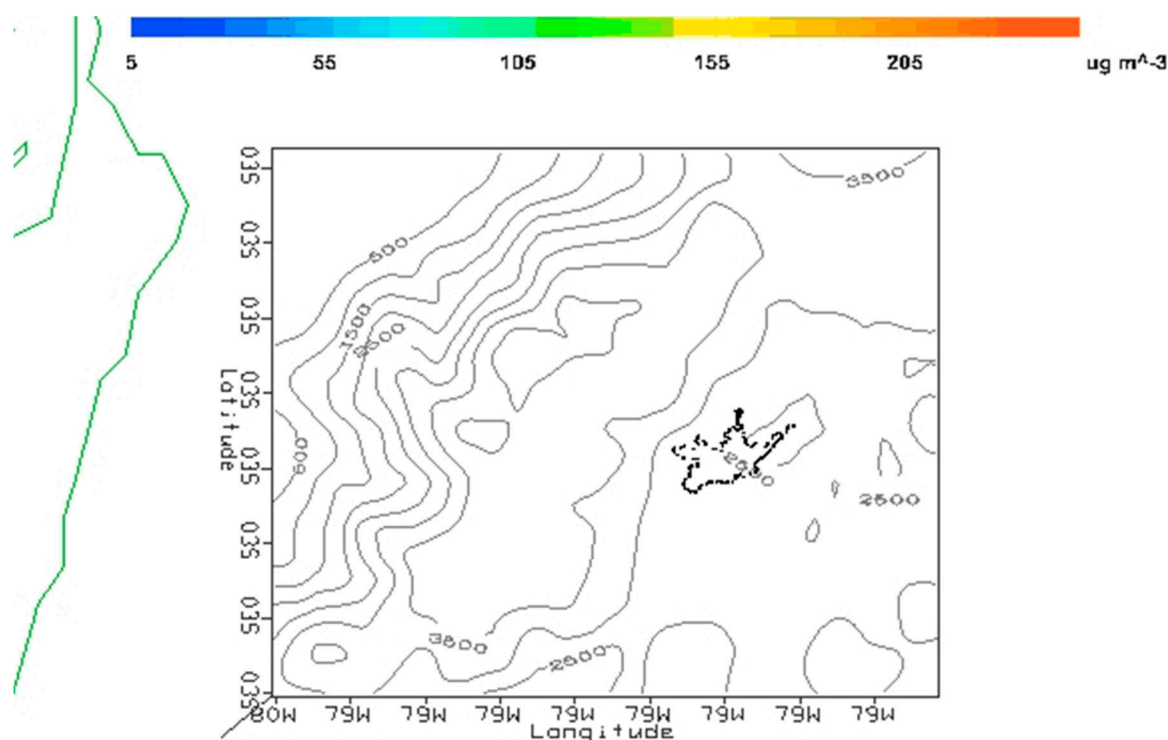


Figure S1. Modeled PM_{2.5} dispersion on 31 December 2021–1 January 2022. Emission beginning at 1 January 2022 00:00 LT.

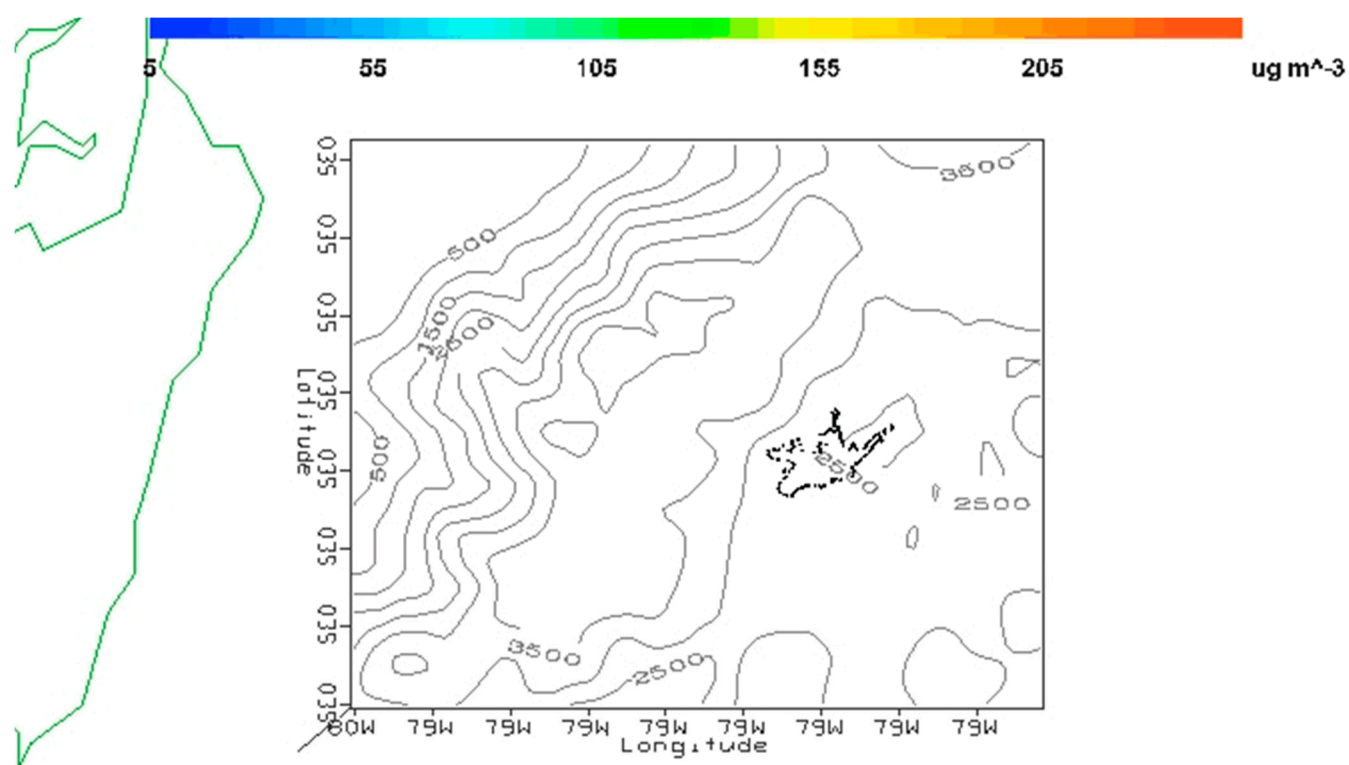


Figure S2. Modeled PM_{2.5} dispersion on 31 December 2021–1 January 2022. Emission beginning at 31 December 2021 21:00 LT.

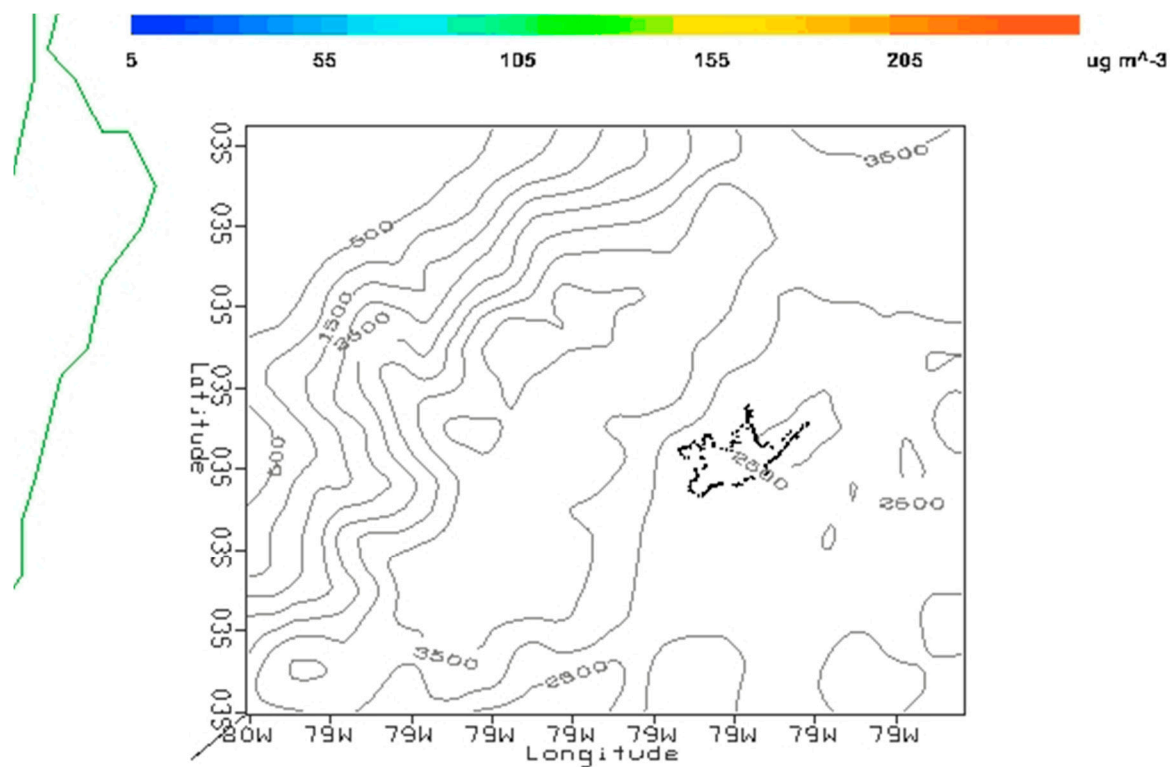


Figure S3. Modeled PM_{2.5} dispersion on 31 December 2021–1 January 2022. Emission beginning at 31 December 2021 18:00 LT.