

Supplementary file

Multiscale analysis of water area, level and flow and their relationships for a large lake connected to rivers: A case study of Dongting Lake, China

Shan Xu ^{1,*}, Liang Zhai ², Bin Zou ³, Huiyong Sang ²

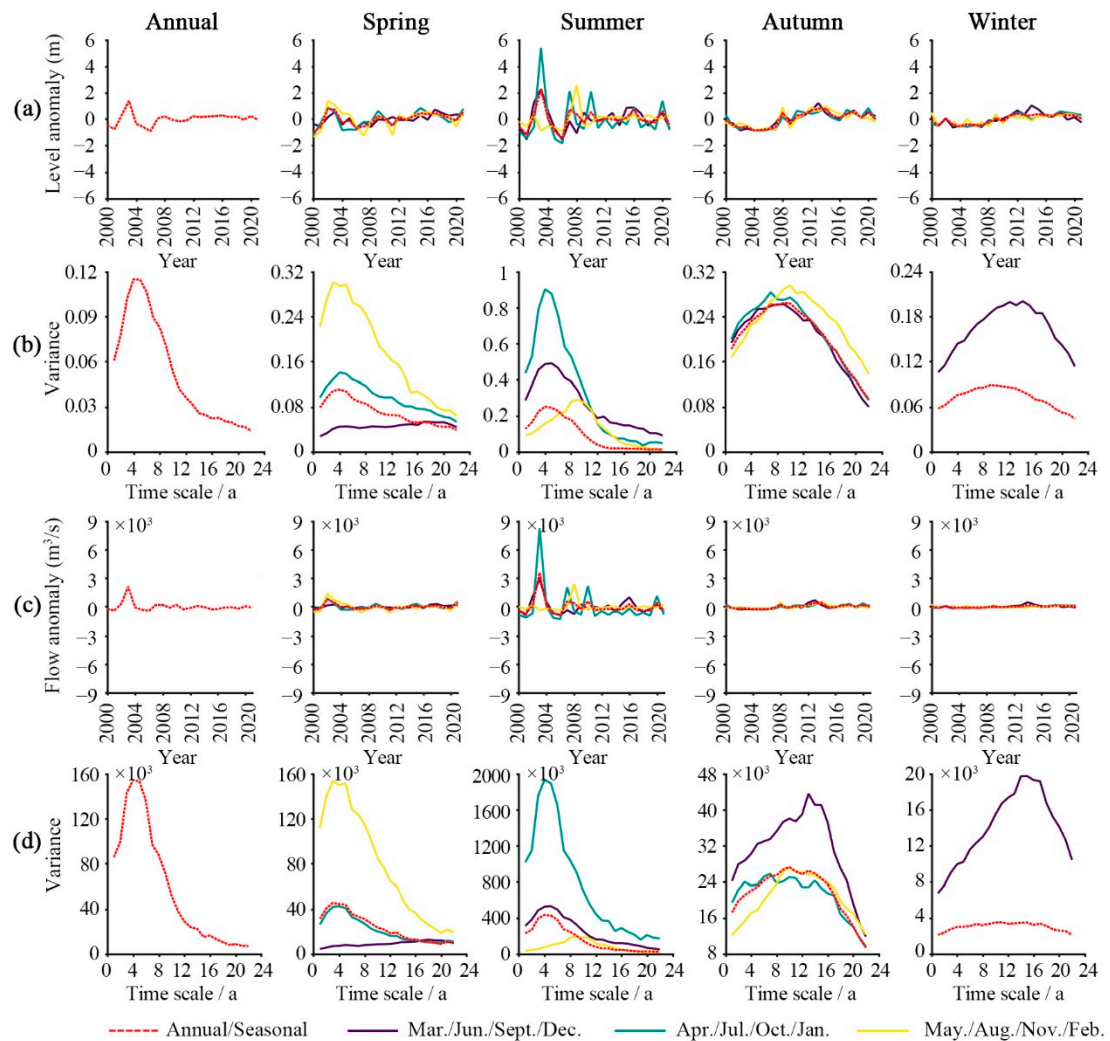


Figure S1. Annual/ seasonal/ monthly (a) water level anomalies, (b) wavelet variance of water level anomalies, (c) water flow anomalies, (d) wavelet variance of water flow anomalies at Shimen station of Dongting Lake

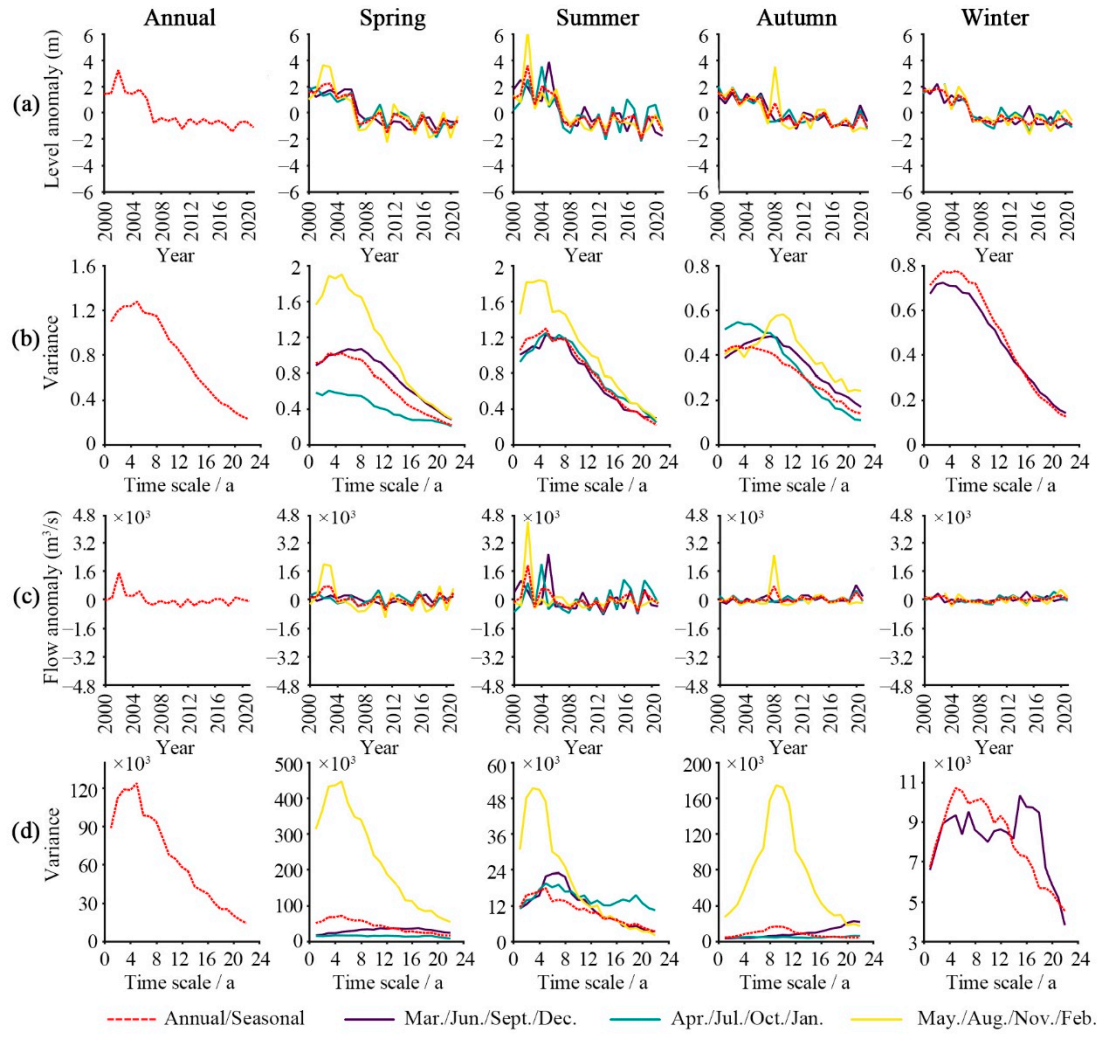


Figure S2. Annual/ seasonal/ monthly (a) water level anomalies, (b) wavelet variance of water level anomalies, (c) water flow anomalies, (d) wavelet variance of water flow anomalies at Taojiang station of Dongting Lake

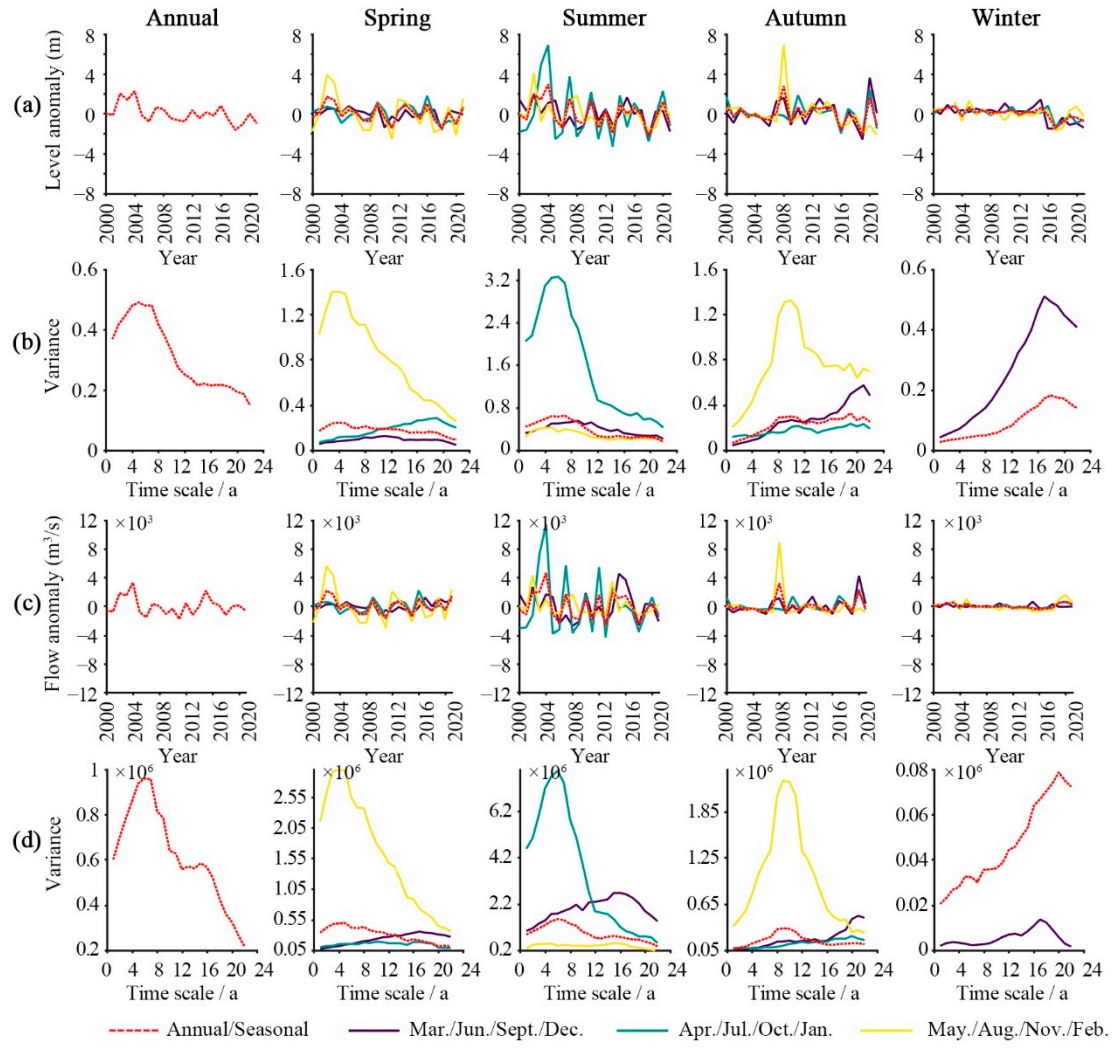


Figure S3. Annual/ seasonal/ monthly (a) water level anomalies, (b) wavelet variance of water level anomalies, (c) water flow anomalies, (d) wavelet variance of water flow anomalies at Taoyuan station of Dongting Lake